

DESCRIPTION	PRO-X 120	PRO-X 190	PRO-X 285
Pond volume	70 m ³	100 m ³	150 m ³
Weight/ Reactor Dimensions	10 Kg	10 Kg	12Kg

Treatment Chamber	PRO-X 120	PRO-X 190	PRO-X 285
Weight of the chamber filled	23 Kg	23 Kg	23 Kg
Chamber UVc volume	14 liters	13.3 liters	13.3 liters
Input/ Output	3"-DN80	3"-DN80	3"-DN80
Material	Stainless Steel 316L	Stainless Steel 316L	Stainless Steel 316L
Service pressure	1 bar	1 bar	1 bar
Pressure max.	2 bars	2 bars	2 bars

Electrical box	PRO-X 120	PRO-X 190	PRO-X 285
Specificity	Remote	Remote	Remote
Electrical consumption	140 à 200 Wh	300 Wh	300 Wh
Voltage Supply	220-240V AC – 50-60Hz	220-240V AC – 50-60Hz	220-240V AC – 50-60Hz
Ambiant temperature	0 - 40 °C	0 - 40 °C	0 - 40 °C

Lamp UVc	PRO-X 120	PRO-X 190	PRO-X 285
Number of lamps	2	2	3
Lamp reference	2G11-PLL60W	2G11-PLL95W	2G11-PLL95W
Germicidal Power	38 W UVc	54 W UVc	81 W UVc
Lamp lifetime	9000 hours	9000 hours	9000 hours

Table of Contents

	Pages
PRESENTATION	2
General Operation Mode	2
INSTALLATION	3
Troubleshooting	3
Maintenance lamp replacements	4
Maintenance quartz sleeve replacements	4

PRESENTATION AND OPERATION

The bactericidal UVc concept has for principale to generate ultraviolet rays inside a treatment chamber. These beams irradiate the living cells that are present in the liquid crossing the device, without modifying their physical-chemical criteria and without generating any residual solution. The activation of the system is via a 220V outlet controlled filtration. When the filtration is stopped, lights are OFF.

Discription of UVc device

A. Stainless Steel Foot:

To fix it on the floor

B. Quartz sleeve(s) and their tightening o-ring:

C. Lamps UVc type 2G11-PLL including :

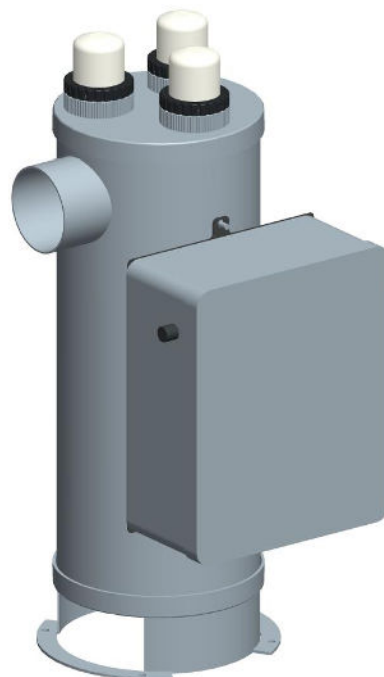
- Translucent Lamp Cap I enabling to visualize the smooth operation of bactericidal.
- 1 O-ring
- 1 Cut Gasket
- 1 micro switch
- 1 gland in derlin for tightness

D. Electrical box including:

- All startup items for the UVc lamps
- Power cable 2Ph + T lg 3 meters

E. Stainless Steel Chamber including:

- 1 water treatment chamber in which the MCR lamps are disposed equipped with quartz sleeve for protection. The tightness of the lamps is done via hydraulic gland (knurled cap).
- 1 Flat seal placed under the gland to damp the rise of the quartz against the gland
- 1 input/output threaded G male



WARNING

- ❖ **Do not use the UVC lamps outside the treatment chamber**
- ❖ **Do not expose your eyes directly to the UVC light**
- ❖ **Never start the systems electrically before the water is in**
- ❖ **The outflow of the water should be on top of the unit**
- ❖ **Differential circuit-breaker to be provided if not existing**
- ❖ **We recommend a water filtration upstream the treatment**

- ❖ This device is not intended for use by persons (including children) whose physical, sensory or mental capacities are reduced, or persons lacking experience or knowledge, unless they have been The intermediary of a person responsible for their safety, supervision or prior instructions concerning the use of the device.

- ❖ Children should be supervised to ensure that they do not play with the device.

- ❖ This unit has a UV-C transmitter.

- ❖ Unsuitable operation or deterioration of the enclosure may result in leakage of hazardous UV-C radiation. UV-C radiation, even in small doses, can be harmful to eyes and skin.

- ❖ Devices which are clearly damaged must not be used
- ❖ Replacement of the UV-C transmitter is not authorized by the user

- ❖ If the power supply cable is damaged, it must be replaced only by the manufacturer to avoid any danger

TERMS OF USE

This device is not intended for use in an aggressive conditions caused by salt in the environment or any type of atmosphere which attacks the Stainless Steel, when using important chemistry, combination of the device with a salt electrolyzer, during The presence of an induced current in the flow which can generate an electrolysis phenomenon.

The electrical box supplied with the device is not intended for use with high temperatures. The electrical drives used to supply the UVc lamps do not tolerate temperatures above 40 ° C. The electrical box must be protected against any type of heat source and also from external aggressions which can prevent its proper functioning (ex: shocks, projections, vibrations ...).

INSTALLATION

Hydraulic Installation

- Ensure that the device is fixed to the floor in the recommended position (vertical)
- We recommend avoiding drilling water for filling up the pools
- The power of the pump must of course be related to the volume of water considered in order to be able to treat it as a whole within a reasonable time (3 to 4 hours)
- Install the system via a bypass installation.
- The direction of water circulation must be from the lower part socket for entry to the top sprinkler for the outlet. Purge the air contained in the device with the aid of the plug provided
- Any type of chemical treatment associated with the UV device must be positioned between it and the discharge and at a distance of at least 100 cm from the reactor.
Put the device under pressure gradually and check for leaks.

Warning : Ensure that the hydraulic connections are tightly sealed before switching the UV device on.

Check the tightening of the Stainless Steel cable gland and connections.

Recommended electrical Installation:

- Before connecting the UV unit to the mains, it is essential to check the protection of the mains plug with a 30mA differential device.
- The power supply must be protected against over pressures and overloads. In addition, the earth of the control box, as well as the reactor earth must be connected to the earth of the installation
- Ensure that all the masses of the technical room, the UVc bactericide and the ground of the electrical outlets connecting the device to the installation are connected (motor, filtration, UVc ...), installation of a pool Earth is advised.
- Make sure that the ground terminal of the electrical box is attached to the device housing
- Connect the UVc bactericidal power supply to the timer contacts of the programming unit so that the unit can start at the same time as the filtration.

NEVER USE ELECTRICALLY THE DEVICE WITHOUT WATER CIRCULATION IN THE PIPELINES IN CASE OF DOUBTS CALL A PROFESSIONAL

Device Maintenance

- Replace the UV lamp and quartz seals at the beginning of the season
- Take off the quartz sleeve and clean and descaling it at the beginning of the season
- Periodically check for leaks

NOTE: For wintering, drain the UV reactor and remove the quartz

ATTENTION : Bactericidal power decreases from 9000 hours of functioning

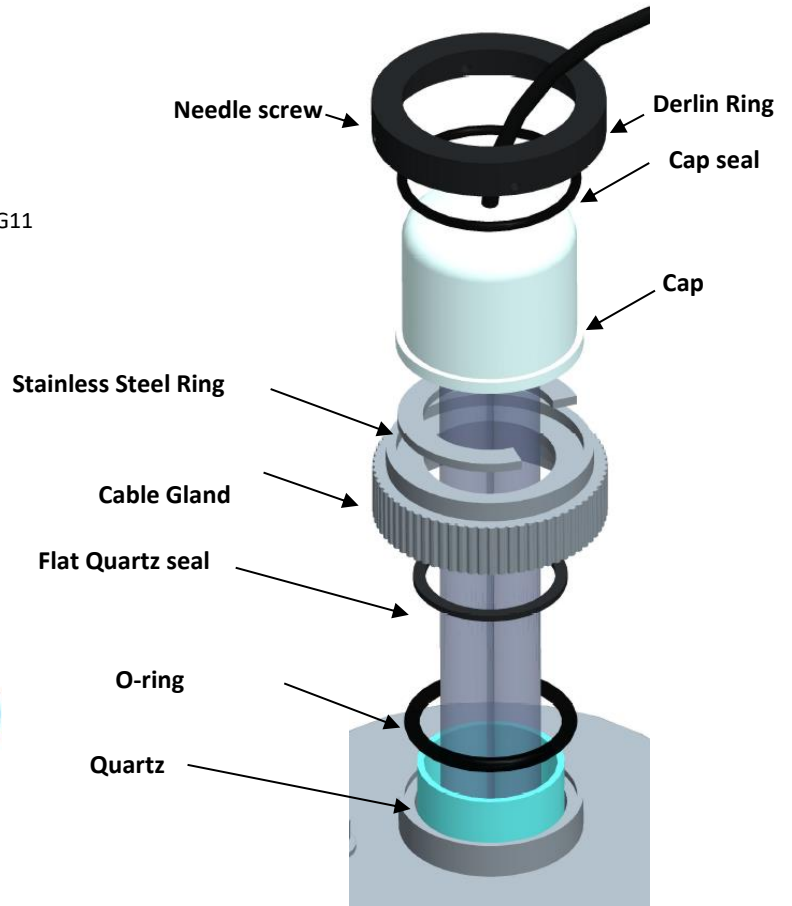
TROUBLESHOOTING

- **Leakage at level of gland** – tighten the glands
- **The quartz sleeve breaks at mounting** – Check the quartz sleeve is centered relative to the treatment chamber before tightening the gland, tighten the gland gently.
- **The lamp does not light up** : Check that the connection is correctly connected, check that the electrical box is powered by 220-230V AC - make sure that the circuit breaker calibration is sufficient, check that the microswitch is switched on because it is this contact which allows the Operation of the lamp.

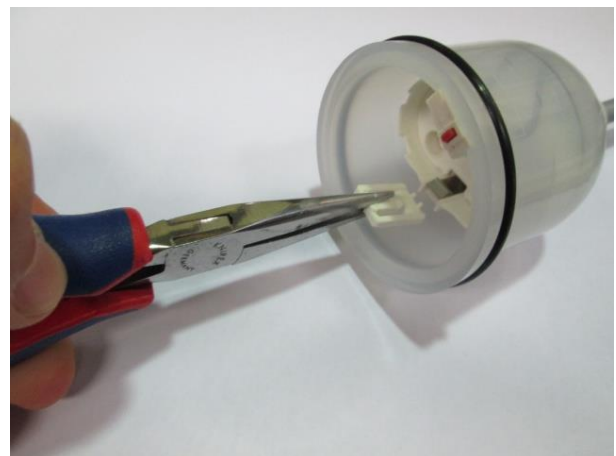
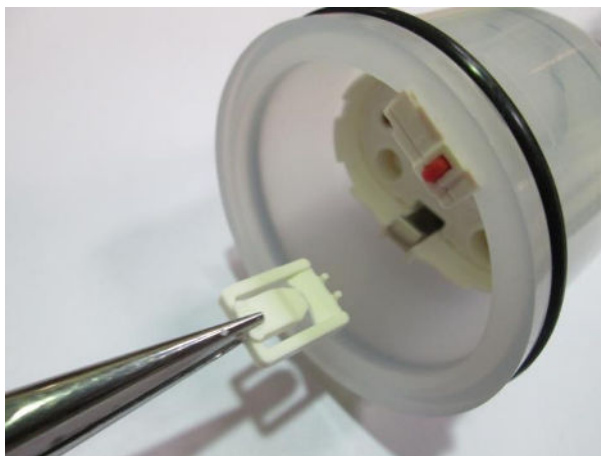
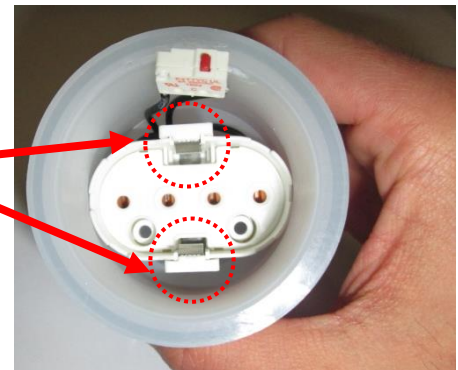
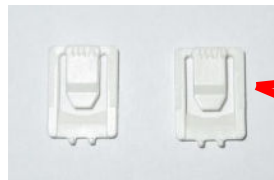
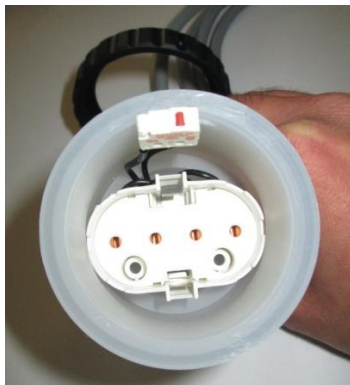
Lamp replacement

- 1 – Turn off the device
- 2 – Cut water from the installation
- 3 – Unscrew the needle screw then the delrin ring
- 4 – Remove the cap and lamp assembly from the device
- 5 – Unclip the lamp and then remove it from socket 2G11
- 5 – Replace 2 locks 2G11 which hold the lamp in the socket 2G11
- 6 – Reposition the new lamp
- 7 – Retighten the delrin ring then the needle screw
- 8 – Put under pressure and check for leakage
- 9 – Switch on the device
- 10 – Check the lamp cap lighting

Note : the microswitch on the cap must be in contact with the Stainless Steel Ring washer to allow operation of the UVc lamp

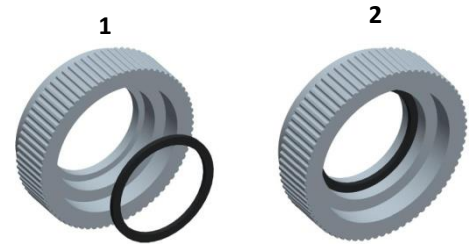


Mounting of Locks 2G11



Quartz Sleeve Replacement

- 1 – Turn Off the device
- 2 – Cut water from the installation
- 3 – Unscrew the needle screw then the delrin ring
- 4 – Remove the cap and lamp assembly from the device
- 5 – Unclip the lamp and then remove it from socket 2G11
- 6 – Unscrew the cable gland
- 7 Extract the quartz sheath from the treatment chamber, taking care to keep it all the time in the axis of the device
- 8 - Clean or replace the quartz sleeve and O-ring
- 9 - Adjust the O-ring on the quartz sleeve (5mm from the edge)
- 10 - Carefully reposition the quartz sleeve
- 11 - Reposition the **Flat Quartz seal on cable gland** (cf. image 1 et 2)
- 12 - Screw the cable gland and check the tightness
- 13 – Reposition the new lamp
- 14 – Retighten the delrin ring then the needle screw
- 15 – Put under pressure and check for leakage
- 16 – Switch on the device
- 17 - Check the lamp cap lighting



ATTENTION

The bactericidal effect of the lamps decreases from 9000 hours of operation, it is therefore imperative to replace the lamp, in case of overtaking you would be exposed to a bacterial risk, the legal germicidal dose no longer being reached

NEVER EXPOSE YOUR EYES DIRECTLY TO UVC LIGHT

Only a professional can take care of the installation and maintenance of the device

CONTRACTUAL GUARANTEE

All our products are guaranteed 12 months from the date of our invoice. Trading supplies (which are not of our construction) are only guaranteed within the limit of the guarantee of our suppliers.

Our warranty covers all manufacturing defects and can only be applied to devices that have been subject to normal use under the conditions of use for which they are intended. Defects and damage caused by natural use or by an external accident (incorrect handling, incorrect assembly, defective maintenance, abnormal use ...) are excluded from the warranty see chapter "Reserves".

The company RER can take as security only the material delivered and the work carried out by itself and will not be held in any responsibility for all the consequences of the work carried out by third parties.

The guarantee is limited to the free replacement or to the repair by the company RER of the recognized defective by our technical service. This warranty does not apply to damage, injury or loss of income from a defective component. The costs of intervention, dismantling, reassembly, packing and transport are the responsibility of the customers.

No compensation may be claimed as damages for any cause whatsoever

Warranty 2 years for stainless steel reactors except when using the device in an aggressive medium of saline type or any type of atmosphere attacking the Stainless Steel, when using important chemistry, Apparatus with a salt electrolyzer when a current is induced in the flow which can generate an electrolysis phenomenon.

1 year warranty for electrical and electronic components except for the UV lamp which has a lifetime of 9000 hours depending on the frequency of ignition (excluding overvoltage and lightning strike)

RESERVES

We would like to draw your attention to the fact that this guarantee can not be applied:

- If the device has been used outside a standard frame, ie under specific conditions not approved by the manufacturer or in the case of non-compliance with the technical requirements in this case transmitted
- If the damage is due to a foreign cause (shocks, abnormal variations in voltage, etc.) or if the installation or use conditions indicated in the operating and operating instructions are not observed, Maintenance, misuse, neglect, faulty or nonconforming electrical installation
- If the user has made a change to the device or removed the marks or serial numbers.
- If a repair has been carried out by a person not approved by the manufacturer or the seller.